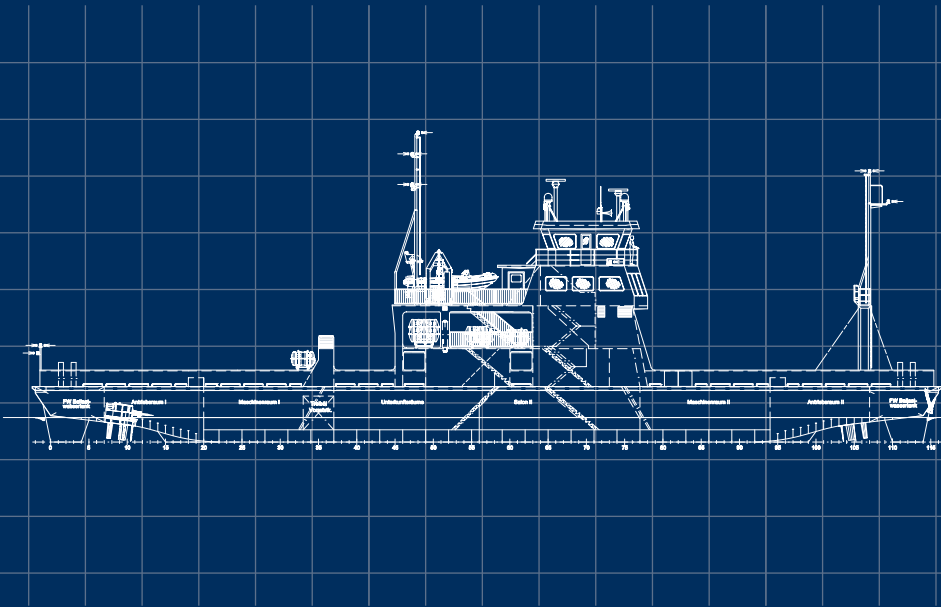




Combined Ro-Ro/Passenger Ferry



MODERN – TRADITIONAL – RELIABLE

Combined Ro-Ro/Passenger Ferry

Combined Ro-Ro/Passenger Ferry for 398 persons designed to transport people and vehicles to and from the east and north Friesland islands.



Equipped for forklift operations, to transport rolling goods, construction cranes, containers and skips as well as general cargo.

Cargo deck with a main deck height across the entire length of the ferry.

Beam in the area of the superstructures.....	9,00 m
Vertical clearance	5,00 m
Axle load	120 kN
Distributed load	14 kN/m ²
Voith propulsion systems	2

Class:

LR + 100 A1 Ro-Ro Passenger Ferry
Specified Coastal Service, EU(D) + LMC

Construction material: Steel or aluminium





Schiffswerft Diedrich GmbH

Hafenstraße 20
26802 Moormerland
Germany

Tel.: +49 4924 91900
Fax.: +49 4924 919044

info@schiffswerft-diedrich.de
www.schiffswerft-diedrich.de